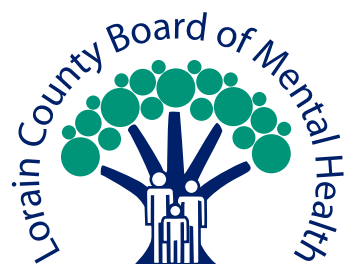


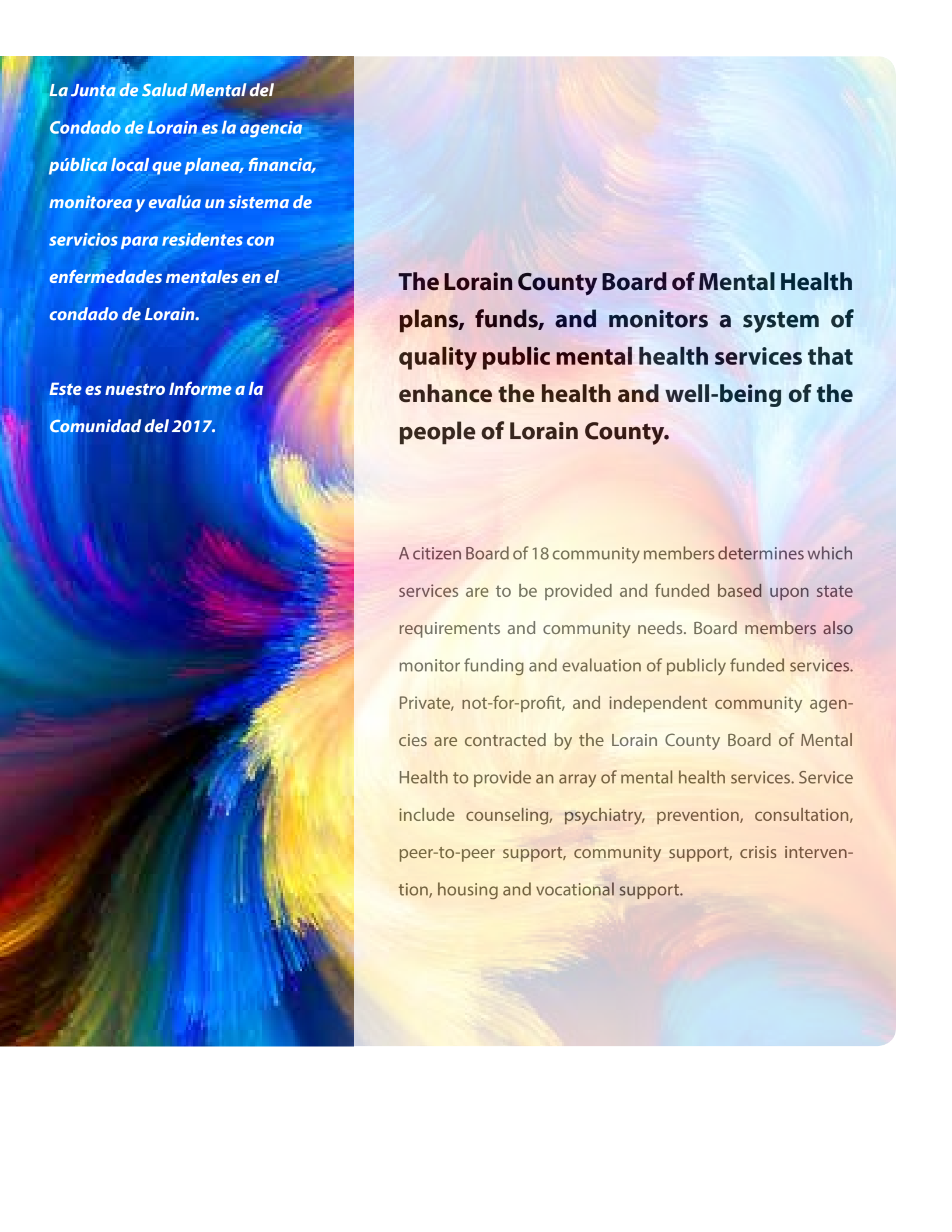
# UNITY

**2017**

**Report to the Community**

*Informe a la Comunidad*





*La Junta de Salud Mental del Condado de Lorain es la agencia pública local que planea, financia, monitorea y evalúa un sistema de servicios para residentes con enfermedades mentales en el condado de Lorain.*

*Este es nuestro Informe a la Comunidad del 2017.*

**The Lorain County Board of Mental Health plans, funds, and monitors a system of quality public mental health services that enhance the health and well-being of the people of Lorain County.**

A citizen Board of 18 community members determines which services are to be provided and funded based upon state requirements and community needs. Board members also monitor funding and evaluation of publicly funded services. Private, not-for-profit, and independent community agencies are contracted by the Lorain County Board of Mental Health to provide an array of mental health services. Services include counseling, psychiatry, prevention, consultation, peer-to-peer support, community support, crisis intervention, housing and vocational support.

# Community

“When people become mentally healthier, and when people overcome their difficulties in life, they become more productive. They do business. They do art. They do sports. They do everything. And that’s what makes a community.”

—Mental Health Crisis Intervention Clinician from the Lorain County mental health network

What makes a community? Without question, it’s the people. The Lorain County mental health network is devoted to helping all people in local homes and neighborhoods live their best possible future.

We are fortunate that alongside the clinical staff who help people recover from mental illnesses, we have strong partnerships within schools, with law enforcement and other first responders, and with local leaders who understand how mental health touches every sector of our community.

Thank you for your ongoing support. The work of the Lorain County Board of Mental Health primarily is supported by local funding through the mental health levy.

*Yours Sincerely,*

**Timothy Carrion**

*Lorain County Board of Mental Health  
Board Chair*

# Highlights on our



*En el 2017, la Junta de Salud Mental del Condado de Lorain apoyó a nuestra comunidad a través de servicios de tratamiento, prevención y crisis.*

*Servimos a las familias.*

*Ayudamos a las escuelas.*

*Entrenamos primeros respondedores.*

*Educamos en la comunidad.*

*Estamos allí en una crisis.*

In 2017, the Lorain County Board of Mental Health (LCBMH) supported our community through treatment, prevention, and crisis services.

## We serve families.

The agencies in our mental health network served thousands of people last year. 23% of those served were kids.

## We help schools.

We are present in every Lorain County school district, serving 1,800 students last year. We have expanded services in schools to meet an ever-growing need, and improved crisis services for children and teens.

## We train first responders.

We train law enforcement officers and first responders in crisis intervention, including trauma-informed policing training last year for 183 officers. That's in addition to continuing to conduct Crisis Intervention Team (CIT) training to help law enforcement officers successfully interact with someone experiencing a mental health crisis. We've trained 235 officers over the last 16 years. From 2013-2017, we provided Advanced CIT training to 80 of those officers. Plus, we co-chair the local Stepping Up Initiative with the Sheriff's Office to address mental illness in the jails.

## We educate in the community.

We provide hundreds of hours of trainings like Mental Health First Aid or suicide prevention classes to community members and professionals.

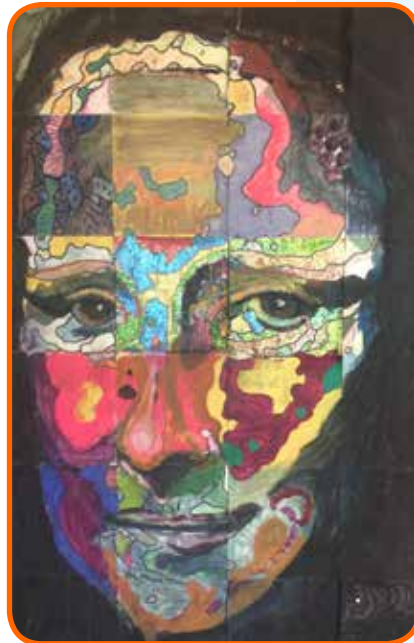
## We are there in a crisis.

Our mental health crisis hotline receives approximately 14,000 calls per year. Also, we are increasing efforts and collaborations to improve the interconnected network of crisis services, from crisis hotline calls to hospital and community-based care, to connection with local law enforcement.

# collaborations



In beautiful, visual examples of working together, **Gathering Hope House** members created two works of collaborative art, "Mona Lisa" and "Maya Angelou." Participants used the grid method. The full image is created one square at a time, person by person, to create a complete picture.



## Board Members

*Miembros de la Junta*

### Timothy Carrion, Chair

David Ashenhurst (Oberlin)  
Dr. Chris Babiuch (Avon Lake)  
Edward Baker (Avon Lake)  
Chad Burnworth (Avon Lake)  
Dr. Denise Eacott (Lorain)  
Maurita Ferguson (Sheffield Village)  
Dr. Tracey Frierson (North Ridgeville)  
James Heron (Oberlin)  
Joseph Hribar (Vermilion)  
Martin Leibas (Lorain)  
Douglas Messer (Elyria)  
Traci Shed (Elyria)  
Debra Singleton (Grafton)  
Andrew Smith (Sheffield Lake)  
Maria Sosa (Lorain)  
Karen Sutera (Lorain)  
Sanford Washington (Lorain)

## Staff

*Personal*

### Dr. Kathleen Kern, Executive Director

Joseph Carver  
Holly Cundiff  
Heather Distin  
Blanche Dortch  
Barry Habony  
Rhonda Heginbotham  
Jeanette Hinkle  
Patrice McKinney  
Vinaida Reyna  
Clare Rosser  
Elizabeth Wolanski

*Members and staff during State Fiscal Year 2017*



# Financial Statement | July 1, 2016 – June 30, 2017

Estado financiero | 1 de Julio del 2016 – 30 de Junio del 2017

## Who Was Served *Clientela | Medicaid y no Medicaid*

Medicaid, Non-Medicaid Clients in Our Network of Providers  
Includes Consultation, Education, and Prevention Services for Youth

**4,556** kids **9,124** adults  
*niños adultos*

Demographics\*:

54% female, 45% male | 64% white, 12% black or African-American,  
18% Asian, other races, or unknown | 87% Non-Hispanic, 6% Hispanic

## FUNDED AGENCIES for State Fiscal Year 2017

*Agencias que recibieron fondos*

Applewood Centers

Beech Brook

Bellefaire JCB

Big Brother Big Sisters

Catholic Charities

El Centro de Servicios Sociales

Far West Center

Firelands Counseling Center

Gathering Hope House

Lutheran Metropolitan Ministry

NAMI of Lorain County

New Sunrise Properties

The Nord Center

OhioGuidestone

Pathways Counseling

Safe Harbor, Inc.

\*Demographics represent adults. Also, numbers may be rounded or estimated or missing some unknown information, and may not always equal 100%.

# Where We Invested

*Inversiones*

**Residential Services: 35.7%**

*Servicios Residenciales*

**Crisis Services: 14%**

*Servicios de Crisis*

**Psychiatry: 10.7%**

*Psiquiatría*

**Case Management: 9.9%**

*Gestión de Casos*

**Counseling: 7.8%**

*Asesoramiento*

**Peer Services: 6.8%**

*Servicios de pares*

**Prevention: 4.2%**

*Prevención*

**Medication: 2.8%**

*Medicación*

**Inpatient Services: 2.2%**

*Servicios para pacientes hospitalizados*

**Vocational: 2%**

*Profesional*

**Other Mental Health Services: 2%**

*Otros Servicios de Salud Mental*

**Mental Health Assessment: 1.9%**

*Evaluación de Salud Mental*

## Our Revenues

*Ingresos*

**85% of the operating budget  
comes from local support:**

**\$11,428,368**

**Local Sources**

*Local*

**\$1,274,370**

**State Sources**

*Estado*

**\$810,668**

**Federal Sources**

*Federal*



# COMM

